

## THE STUDENT UNION OF UNIVERSITY OF SUFFOLK

### EXPRESSION OF INTEREST

Expressions of Interest are invited from organisations interested in providing flexible, tailored catering services and provision to the University of Suffolk community of students, staff and visitors, with potential to broaden this to the wider local community.

The services should be delivered through a new or existing social enterprise entity, which will work in partnership with the University and the Students' Union to develop and provide direction for the provision.

Expressions of Interest will be assessed on the following factors:

- The financial sustainability of the business model proposed.
- The degree to which the vision and ethos of the proposal complements the University and the Students' Union's own missions and values.
- The degree to which the proposal will support the broader interests of the University community, especially the student experience.
- The degree that students are envisaged be involved in the social enterprise, for example, through employment or other engagement opportunities.
- The proposals for the use of surpluses generated from the operations, for example, for reinvestment in the facilities, supporting student life at the University, etc.
- The experience and competence demonstrated by interested parties in running social enterprise business models.

In preparing their Expressions of Interest, organisations are specifically asked to consider the following issues:

- How they will determine an appropriate price point for the provision and services offered.
- How the provision and management of licenced premises will be incorporated into their proposal.
- How the services to the University community might be balanced against wider public usage.
- How the operation would support student safety and welfare.

The facilities comprise:

The facilities / space available is part of the ground floor premises at the James Hehir Building, situated at Duke Street and Orwell Quay IP3 OFS

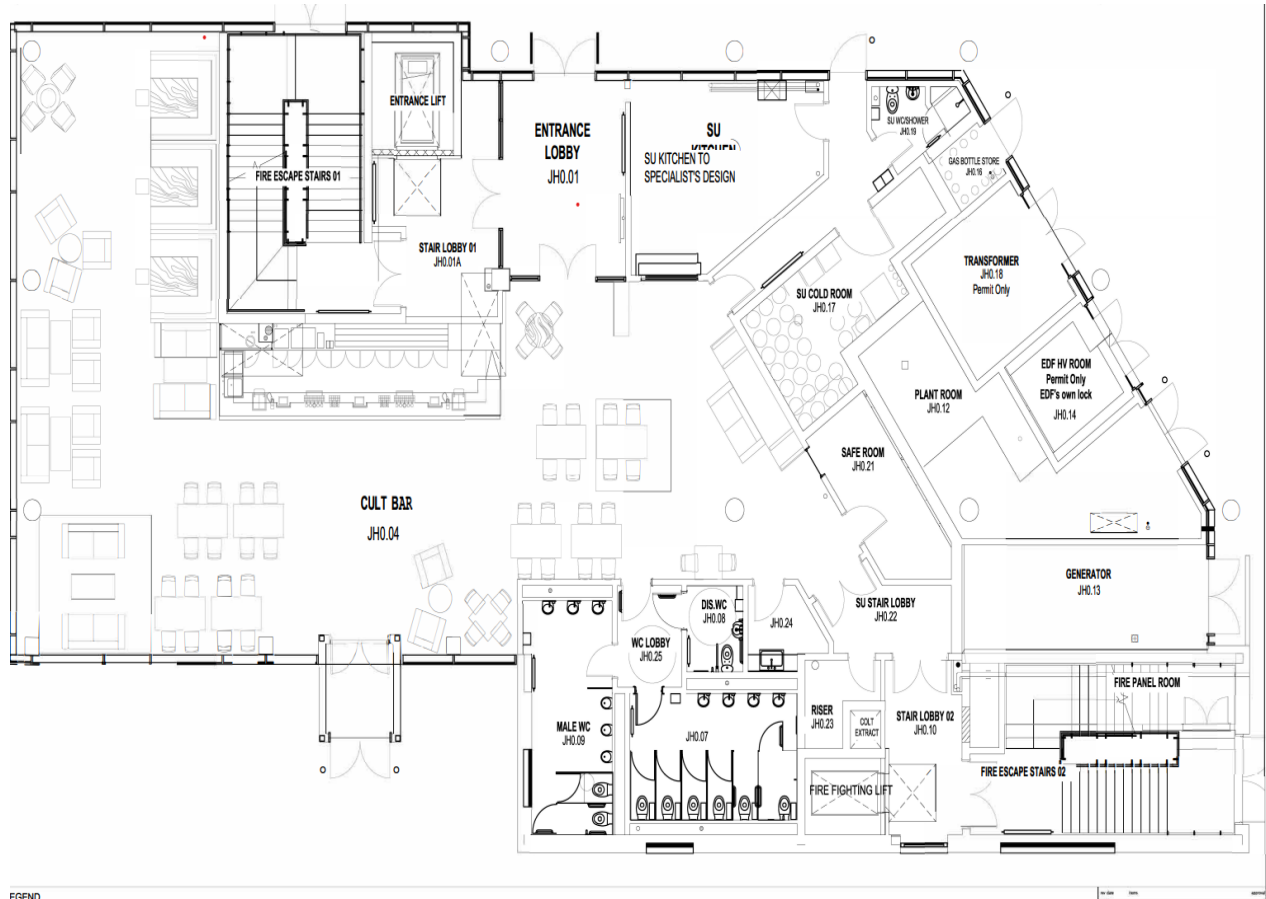
The total area of the space available comprises:

<b>Description</b>	<b>NIA Area</b>
Bar Area	255.9
Kitchen Area	26.5
Cold Room	17.4
Safe Room	11.6

The attached floor plan shows the space available. The space will include furniture, light fixtures, kitchen equipment including full cooking facilities, sound systems and LED Screens in the 'bar area'. Pipe work (for casks) from the cold room are in place and runs to the bar area.

The premises are permitted to be used as a café/bar under the classes of A3 and A4 of the Town and Country planning order 1987.

There is also the possibility to use the outdoor space. This can be agreed with the University once the services are operating.



You may arrange a viewing of the premises by contacting **Michael Horton** at <M.Horton3@UOS.AC.UK>

Your Expression of Interest should be in the form of a business case for the space, and to be addressed to:

Jacob Love

[j.love@uos.ac.uk](mailto:j.love@uos.ac.uk)

Head of Operations

University of Suffolk Students Union

Subject: JMB Expression of Interest

By no later than: 9am on Wednesday 31 May 2023

